

2819 J. S. 7. 10.

# The Story of BURJEITH





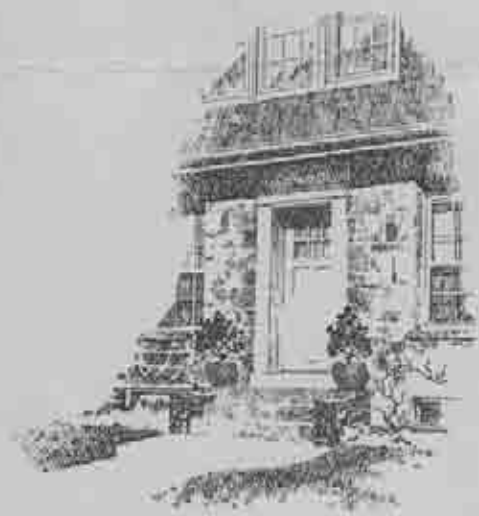
*A group of homes in  
The Barlick Community.*

smaller homes, due to the difference in the habits of the people. The builders who have failed to see this, or seeing it, have failed to meet it, are behind the times indeed.

The Shannon & Luchs organization has learned these fundamentals through their years of association with the home buying public.

From all this the BURLEITH IDEA was developed. We keenly felt that the buyer of moderate means, but of more than ordinary good taste, had not yet been satisfied. Now that this idea has become a reality, it is fitting that we tell you of its development and tell you of what BURLEITH has to offer you.

We do not propose to dwell at length on the homes—homes never spoke more adequately for themselves. Rather, we propose to tell you of the unmistakable appeal that this community makes to the family that demands something more than just four walls and a roof.



THE STORY OF  
**BURJEITH**



*"A man is always nearest to his god  
when at home—and furthest from it  
when away."*

*—Titcomb*

**SHANNON & LUCHS**

INCORPORATED

713, 715 and 717 14th STREET N. W.

WASHINGTON, D. C.



A BURLEITH LIVING ROOM.

Oh, the thing that we call Living  
Isn't gold or fame at all!  
It's fellowship and sunshine  
And it's roses by the wall.  
It's evenings glad with music  
And a hearth fire that's ablaze  
And the joys that come to mortals  
In a thousand different ways.

—Edgar Guest

*Step by step, since time began,  
I see the steady gain of man.*

—WHITTIER



SINCE time began man has been improving the physical comfort of his existence. A comparison of today's conveniences with those of only fifty years ago makes one realize how amazing this progress has been. However, a brief survey of the homes of today will reveal that the architectural development has not kept pace—except in the homes of the very wealthy. Until recently, the home available to the family of moderate means has been little more than just a place to live. Well built? Mostly, yes, but totally lacking in the essentials which distinguish a house from a home. We are asked, "what are these essentials?" Over twenty years of experience in the business of building homes has taught us to rank environment first.

ENVIRONMENT is the most vital factor, affecting not alone the value of a home but also the progress of the family occupying that home. This cannot be over emphasized.

ARCHITECTURAL attractiveness we rank next. Not a wild departure from accepted standards in an effort just to be different, but sincere effort applied to design in order to attain character. For therein lies not only contentment but permanence of value.

SOUNDNESS of Construction follows in natural sequence. Experience plus knowledge of modern methods is essential to attain this most important element, as well as the ability to differentiate between knick-knacks and essentials.

PLANNING. It is said that an individual must build four houses before getting what he really requires. The builder of today who does not keep in touch with the home requirements of today soon proves it in his product. There has been a vast change in recent years in home requirements, particularly in the



smaller homes, due to the difference in the habits of the people. The builders who have failed to see this, or seeing it, have failed to meet it, are behind the times indeed.

The Shannon & Luchs organization has learned these fundamentals through their years of association with the home buying public.

From all this the BURLEITH IDEA was developed. We keenly felt that the buyer of moderate means, but of more than ordinary good taste, had not yet been satisfied. Now that this idea has become a reality, it is fitting that we tell you of its development and tell you of what BURLEITH has to offer you.

We do not propose to dwell at length on the homes—homes never spoke more adequately for themselves. Rather, we propose to tell you of the unmistakable appeal that this community makes to the family that demands something more than just four walls and a roof.

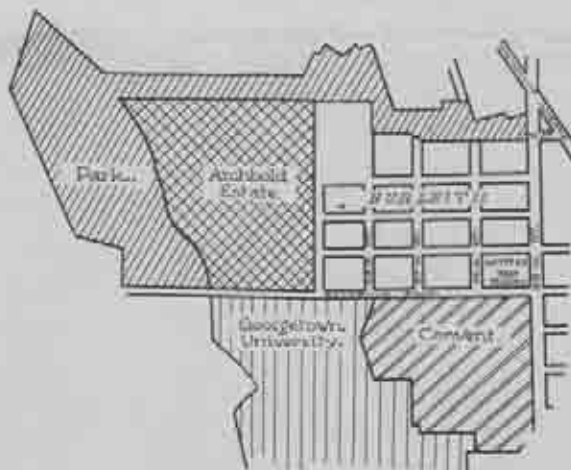
Adjacent to historic old Georgetown, whose traditions and prestige go back beyond the earliest days of Washington, and which now has within its borders the finest estates and mansions in this part of the country, BURLEITH, for that reason alone would command your consideration. The map on the opposite page, however, indicates a more important and vital condition.

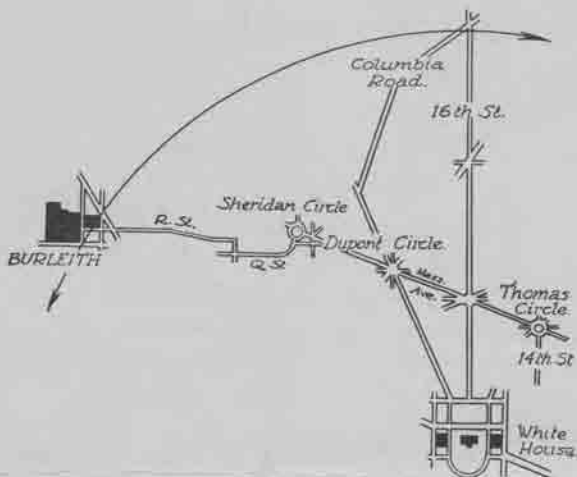
The entire southern boundary of this community is formed by the holdings of two great educational institutions: the Georgetown University and the Convent of the Visitation. Both have extensive building programs which will in the future develop these tracts. And it is a matter of history that when Catholic Institutions build, they build well.

The western border of BURLEITH is the eastern border of the magnificent estate of the Archbold family; an estate which is rapidly becoming the show place of the city. It has been intimated that this estate will be given to the city to form a part of the Glover-

Archbold Parkway which the map shows a little to the west.

To the north are the tracts recently purchased by the U. S. Government for the purpose of forming a connecting link between the Glover-Archbold Parkway and the Rock Creek Park system. The purchase of this ground is not a plan for the future dependent upon action of Congress for its consummation, but the Ground is actually owned by the Government at the present time.





When all of this is taken into consideration, one cannot but feel that we have here an ideal location for homes of any price. In that fact lies your guarantee of future enhancement of values. The scales are tipped still further, however, by two other most important factors; namely, convenience to the business and shopping centers of the city, and school facilities.

The accompanying map will show that BURLEITH is even closer to the heart of the city than Sixteenth Street and Columbia

Road, a fact seldom realized by Washingtonians. Served by the Bureith Bus line of the Washington Railway and Electric Company, residents here are afforded rapid, safe, clean transportation to the center of the city. This line has been so successful since its inauguration that its eastern terminus is shortly to be moved to the Union Station and the Capitol. In these days of traffic congestion and regulation such service takes on an added value.

The school facilities of this community are indeed unusual. Within the borders of BURLEITH, we have an excellent graded school and the nationally known Western High School. This school has been, and today is even more so, the outstanding college preparatory school of the city. This fact is reflected in the personnel of the faculty and pupils. Recently ground has been purchased one-half square from BURLEITH for a junior High School. A short distance away is the parochial school of the Trinity Church, the Convent of the Visitation, and the Devitt School, a school preparing for West Point and Annapolis.



A BURLEITH  
DINING ROOM



DINING  
ALCOVE



A KITCHEN TO DELIGHT THE HOUSEWIFE



**THE PERFECT BATH—A FEATURE OF BURLEITH HOMES.**

These facts may mean much or little to you individually, but you cannot fail to appreciate their effect on property values and their contribution to the environment and atmosphere of this community. The contentment and enthusiasm which this has brought to the residents of BURLEITH has been strengthened by rigid adherence on our part, to an unusual high standard in our selection of purchasers.

You can purchase in any part of BURLEITH with absolute confidence that this standard will be maintained.

And now a word about the homes—The architectural treatment has created a new conception of the small home. The individuality and charm of the groupings has set a new standard; its influence is being felt not only in Washington but all over the country.

The interior arrangement has come out of the fund of experience gained by many years of contact with home problems. We have gone far beyond the ordinary conception of planning, and have produced a home that offers a comfort and convenience heretofore considered impossible in homes of this price. And this has been done in a manner that gives the home owner a minimum of operating expense; an item to which serious consideration should be given in the purchase of any home.

The story of BURLEITH is a story of a richly deserved success. Our pride is shared with over three hundred families who have



purchased homes here. They sought an answer to a problem and found it—in BURLEITH. We believe you can profit with them.

## PRICES

\$8,950

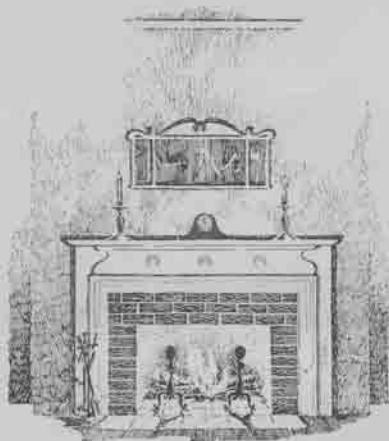
to

\$13,500

*Our confidence in these homes is such that we gladly enter a partnership with you to make it possible to purchase on a small cash payment and make payments monthly.*



SHANNON & LUCHS  
INCORPORATED



The fire upon the hearth burns low  
And there is stillness everywhere,  
And, like winged spirits, here and there  
The firelight shadows fluttering go.